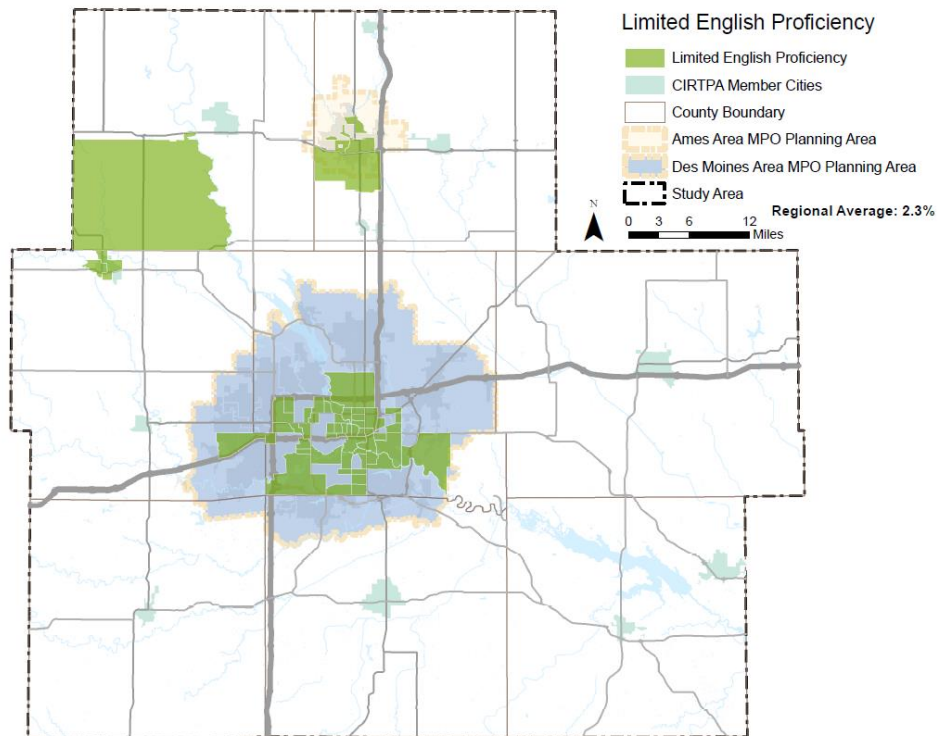


Area Profile

The CIRTPA planning area is located in Central Iowa, occupying the following eight counties: Boone, Dallas, Jasper, Polk, Madison, Marion, Story, and Warren. Within the CIRTPA region lays the Des Moines Area MPO, located in portions of Dallas, Polk, Madison, and Warren Counties, as well as the Ames MPO within Story and Boone Counties. According to the 2012-2016 American Community Survey 5-year estimates, the eight-county region is home to more 760,000 people, with roughly 500,000 residing inside the Des Moines Area MPO planning boundary. The region's unemployment rate averages at 3.5 percent, falling below the current national rate of 6.7 percent (US Bureau of Labor Statistics). The average poverty rate also falls below the national rate of 14.3 percent, at 9.6 percent of all people. While unemployment and poverty rates sit below the national averages, there is still a need to focus on passenger transportation in the region. On average, only about 1.2 percent of people currently use public transportation as a means of commuting to work. With an aging population in the rural areas of the region and a growing demographic of urbanites choosing public transportation over driving, demand for other means of transportation is rapidly growing.

To address the needs of the region's limited English proficient (LEP) population, an analysis was performed to locate concentrated areas where LEP populations live. Using 2011-2015 American Community Survey 5-year data, the percent of the population considered to be LEP for each census tract was calculated and compared to all census tracts in the eight-county region. Any tract that had a percentage above the regional average of 2.3 percent was determined to be a concentrated area of LEP populations. The map below displays these areas.



Map 1: Central Iowa Limited English Proficiency Analysis (ACS, 2011-2015 5-year Average)

A majority of the LEP census tracts are located within or near the two MPO boundaries in the region (Des Moines Area MPO and Ames Area MPO). Additional concentrated areas of LEP populations

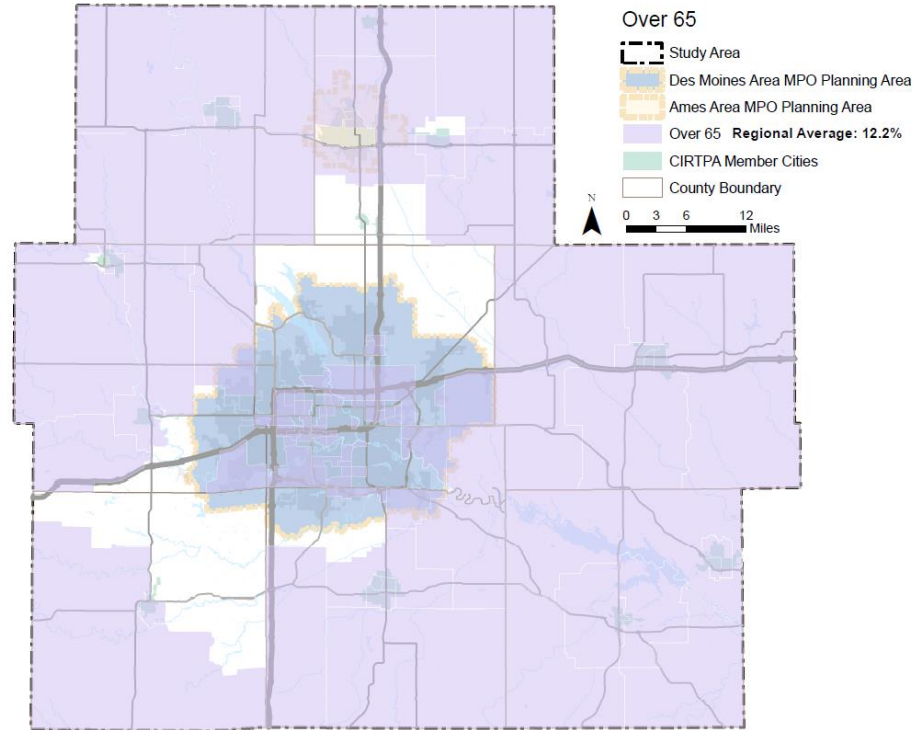
exist in the City of Perry, which is located near the northern border of Dallas County. The following table breaks down the amount of LEP households by county.

County	Total Households	LEP Households	LEP Percent	Over 500 LEP Households?
Boone	10,759	25	0.2%	No
Dallas	27,593	452	1.6%	No
Jasper	14,437	22	0.2%	No
Madison	6,225	40	0.6%	No
Marion	12,978	91	0.7%	No
Polk	177,049	5,283	3.0%	Yes
Story	35,901	1,120	3.1%	Yes
Warren	18,009	9	0.0%	No
Total	302,951	7,042	2.3%	-

Table 1: Regional Analysis of Households with Limited English Proficiency (ACS, 2015)

The LEP population’s need for access to passenger transportation programs and activities includes providing schedules and brochures in languages other than English. Within the Des Moines Area MPO, services such as the Des Moines Area Regional Transit Authority (DART) offer a number of foreign language translations of their website through Google, and have a translation service that users can call into for many different languages. For areas outside the Des Moines Area MPO, services like HIRTA provide translation for various brochures and schedules.

Along with LEP populations, concentrations of persons over the age of 65 are also important for transit agencies to locate, as these populations rely more heavily on passenger transportation. The following map displays concentrated areas of persons over the age of 65. These areas were determined using the same methodology used for locating LEP areas. The map shows that a majority of the census tracts outside of the two MPO planning areas have high concentrations of persons over 65.



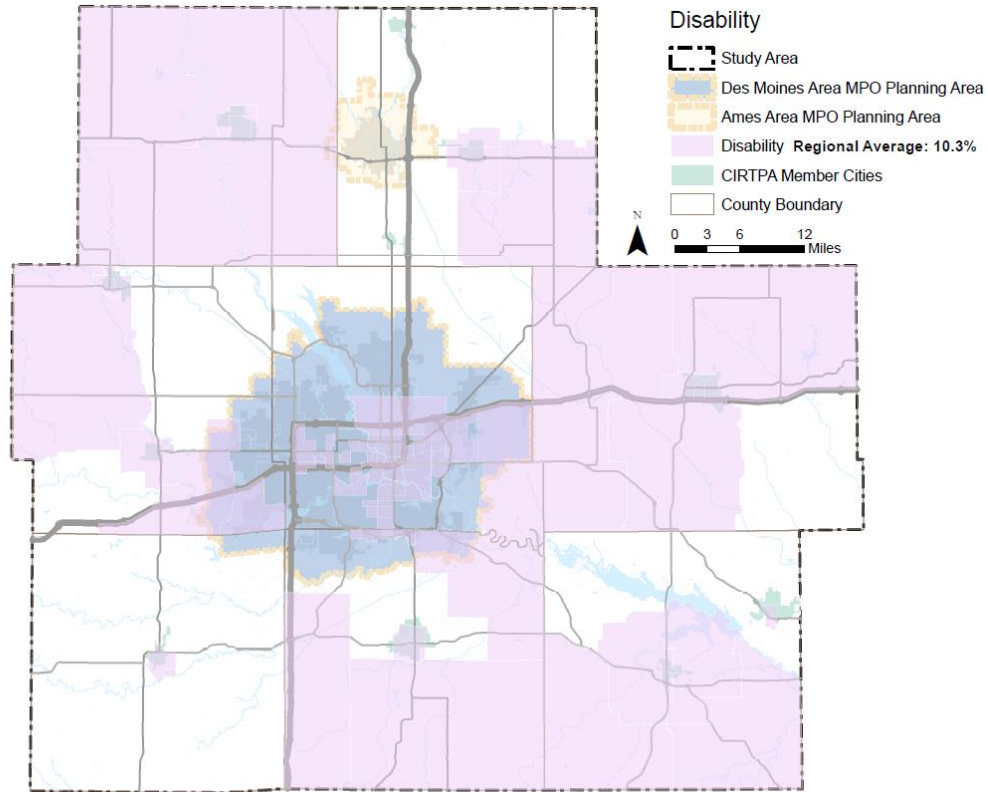
Map 2: Regional Analysis of Populations over 65 (ACS, 2011-2015 5-year Average)

Looking regionally, the total estimated number of people over 65 make up 12.2 percent of the entire population. Of all the counties, Jasper County has the highest percent, sitting at 17.7, and Story County has the lowest at 10.4 percent. All of these numbers are growing regionally. The following table breaks this information down by county estimates.

County	Total Population	Population over 65	Percent over 65
Boone	26,401	4,431	16.8%
Dallas	74,892	8,111	10.8%
Jasper	36,726	6,489	17.7%
Madison	15,644	2,444	15.6%
Marion	33,248	5,378	16.2%
Polk	452,369	51,709	11.4%
Story	93,586	9,698	10.4%
Warren	47,542	6,828	14.4%
Total	780,408	95,088	12.2%

Table 2: Regional Analysis of Populations over 65 (ACS, 2011-2015 5-year Average)

Similar to populations over 65, people with disabilities are also more dependent on passenger transportation. Concentrated areas of people with disabilities were determined using the same methodology as the previously mentioned population groups. The following map shows that there is a scattering of disabled population groups across the CIRTPA region.



Map 3: Regional Analysis of Persons with Disability (ACS, 2011-2015 5-year Average)

Overall, 10.3 percent of the total population in the region has a disability. The county with the highest percentage is Jasper County, at 14.8 percent. Story County is the lowest, with 7 percent of its population having a disability. The table below displays information for all counties in the CIRTPA region.

County	Total civilian noninstitutionalized population	Population with Disability	Percent with Disability
Boone	25,769	3,643	14.1%
Dallas	74,382	5,656	7.6%
Jasper	35,023	5,189	14.8%
Madison	15,457	1,858	12.0%
Marion	32,999	4,084	12.4%
Polk	447,444	46,791	10.5%
Story	92,861	6,510	7.0%
Warren	46,957	5,311	11.3%
Total	770,892	79,042	10.3%

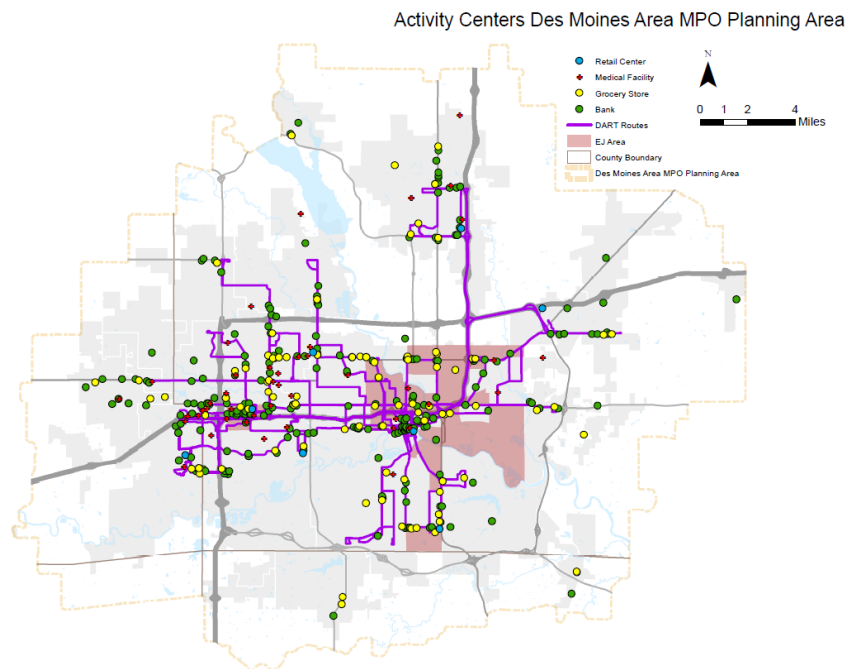
Table 3: Regional Analysis of Persons with Disability (ACS, 2011-2015 5-year Average)

Major activity centers in the region exist within the two MPO planning areas. Inside of the Des Moines Area MPO, large employers are located in various locations across Greater Des Moines. The primary

employment center is located in downtown Des Moines, where several large employers are based, including Principal Financial Group.

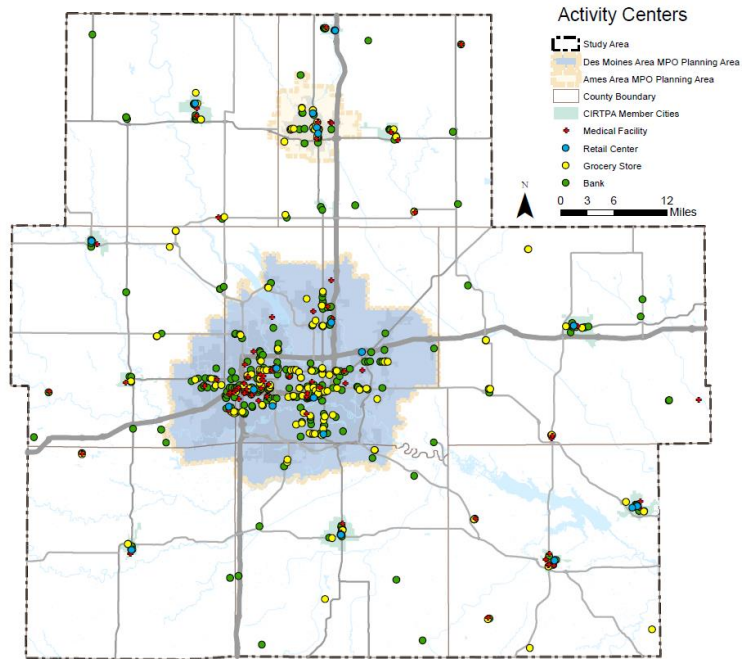
West Des Moines offers another employment center, surrounding the Jordan Creek Town Center. The existing mall in the area provides a large number of retail jobs and is a popular destination point for people across the entire CIRTPA/DMAMPO region. Large corporate offices such as Wells Fargo and Athene USA also add many jobs to the area.

The Greater Des Moines region offers a large amount of health care facilities near downtown Des Moines, as well as in West Des Moines, near 60th Street and University Avenue. Access to the various activity centers via public transit is displayed on the map on the following page.



Map 4: MPO Region Activities Center

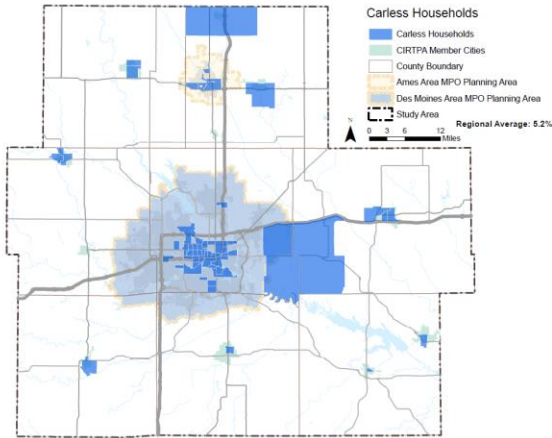
Looking beyond the Des Moines Area MPO boundary and into the more rural areas of the region, activity centers can typically be found in the larger communities that are current members of CIRTPA. These communities typically have stronger downtowns and larger health care facilities that serve a greater portion of the region. Along with health care facilities, grocery stores and retail centers in the region also tend to be located in these communities, while banks have a higher frequency and can also be found in the smaller communities throughout each of the eight counties. The following map displays these activity centers.



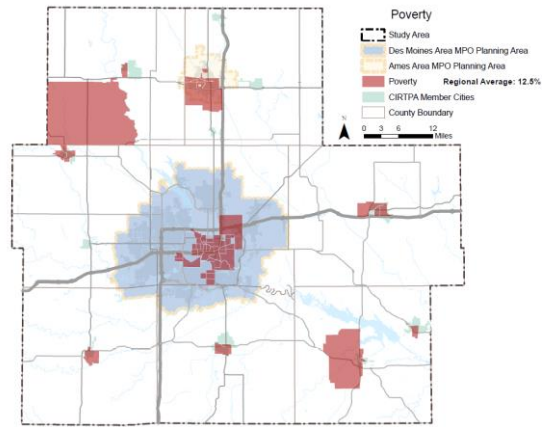
Map 5: CIRTPA Region Activity Centers (InfoGroup, 2014)

An understanding of where activity centers are in the region is a key component to successful passenger transportation planning. These areas provide both amenities and necessities to residents throughout the region. Access to these centers, then, becomes a need for those that rely on public transit as a means of transportation. By mapping the locations of banks, grocery stores, medical facilities, and retail centers, transit agencies can determine areas that currently do not have access via public transportation. Currently, the Heart of Iowa Regional Transit Agency (HIRTA) provides door to door transit services to all of the counties in the CIRTPA region, with the exception of Polk County. The Des Moines Area Regional Transit Authority (DART) serves a majority of the Des Moines Area MPO planning area, and is the largest public transit agency in Iowa.

Nearly 6 percent of the region is carless and more than 13 percent falls below the poverty level. These affect the Greater Des Moines population more than the region as a whole, and should be taken into consideration by organizations working within those boundaries. Maps of each of these population concentrations can be found on the next page.

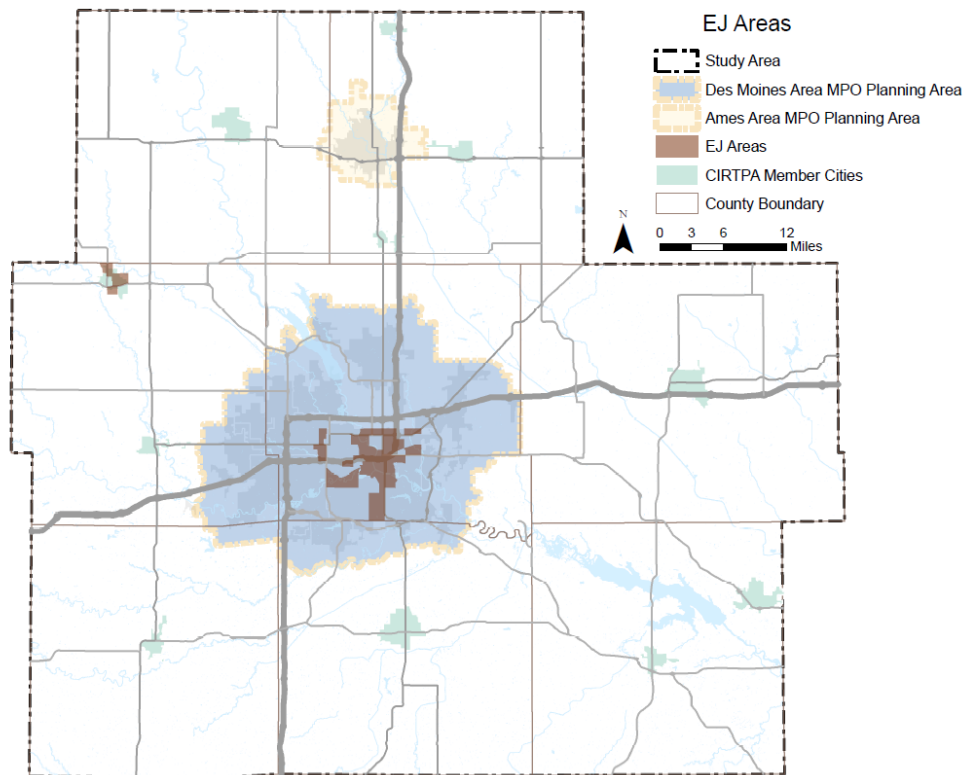


Map 6: Regional Analysis of Carless Households (ACS, 2011-2015 5-year Average)



Map 7: Regional Analysis of Poverty (ACS, 2011-2015 5-year Average)

Finally, the combination of these statistics, considered degrees of disadvantage, provides a glimpse at environmental injustice within the region. As shown in the map below, these areas are concentrated to central areas of the MPO region, specifically within Des Moines and West Des Moines, as well as, within the City of Perry.



Map 8: Regional Analysis of Environmental Injustice (ACS, 2011-2015 5-year Average)